

CUSTOMER IS RESPONSIBLE FOR DETERMINING THAT MOTOR PERFORMANCE IS SUITABLE IN THE APPLICATION.

REV. DESC: LOADED TO ACAD; ADDED NEW KBOX & LID			
REV. LTR: D	BY: RT	REVISED: 10:23:14 07/28/2004	TDR: 339024
6602Y74C		FILE: AAA00042664	REF: 34LY3099
		MTL: -	

BALDOR ELECTRIC Co.

STD VERT 34L NEMA 56J TEFC

BALDOR® • *RELIANCE*

Product Information Packet

JL3405A

.33HP,3450RPM,1PH,60HZ,56J,3416L,TEFC,F1

Product Detail							
Revision:	H	Status:	PRD/A	Change #:		Proprietary:	No
Type:	AC	Prod Type:	3416L	Elec. Spec:	34WGX609	CD Diagram:	CD0094
Enclosure	TEFC	Mfg Plant:		Mech Spec:	34-3099	Layout:	34LY3099
Frame:	56J	Mounting:	F1	Poles:	02	Created Date:	
Base:	N	Rotation:	FOS	Insulation:	B	Eff. Date:	02-26-2007
Leads:	4#18,1#16	Literature:		Elec. Diagram:		Replaced By:	
Nameplate NP1257L							
CAT.NO.	JL3405A						
SPEC.	34-3099X609						
HP	.33						
VOLTS	115/230						
AMP	6/3						
RPM	3450						
FRAME	56J	HZ	60	PH	1		
SER.F.	1.75	CODE	M	DES	N	CL	B
NEMA-NOM-EFF		PF					
RATING	40C AMB-CONT						
CC		USABLE AT 208V					
DE	6203	ODE	6203				
ENCL	TEFC	SN					
	SFA 7.4/3.7						

Parts List			
Product ID	Description	Quantity	List Price
SA018265	SA 34-3099X609	1.000	145.00
RA014418	RA 34-3099X609	1.000	121.00
EC1130A02SP	ELEC CAP 115V 1.4 X 3.3 X	1.000	14.00
NS2512A01	INSULATOR, CONDUIT BOX X X	1.000	2.00
34CB3002A	CB CAST W/.88 DIA HOLE	1.000	13.00
34GS1029A01	GASKET, CONDUIT BOX	1.000	2.00
51XB1016A07	10-16 X 7/16 HXWSSLD SERTYB	2.000	2.00
11XW1032G06	10-32 X .38, TAPTITE II, HEX WSHR SLTD U	1.000	2.00
51XW0832A07	8-32 X .44, TAPTITE II, HEX WSHR SLTD SE	2.000	2.00
34EP3102A01SP	FR ENDPLATE, MACH	1.000	68.00
NS2500A01	INSULATOR, AUTO THER PROT	1.000	2.00
34CB4800SP	CAPACITOR COVER,STAMPED X X	1.000	20.00
34GS3000SP	GASKET, CAPACITOR BOX X X	1.000	3.00
51XB1016A05	10-16X5/16HX WA SL SR TYB (F/S)	2.000	2.00
HW5100A03SP	WAVY WASHER (W1543-017)	1.000	2.00
34EP3300A24SP	PU ENDPLATE, MACH	1.000	63.00
51XN1032A20	10-32 X 1 1/4 HX WS SL SR	2.000	2.00
34FN3002A01SP	EXTERNAL FAN, PLASTIC, .637/.639 HUB W/	1.000	14.00
34FH4002A03	IEC FH NO GREASER W/.88 DIA SHAFT HOLE	1.000	23.00
51XW1032A06	10-32 X .38, TAPTITE II, HEX WSHR SLTD S	3.000	3.00
WD4100A81	CAPLUG BPF-7/8, FOR .86-.88 HOLE	1.000	2.00
34CB4517	CB LID 4 MTG HOLES .22 DIA STAMPED, FOR	1.000	5.00
34GS1031A01	GASKET, FLAT CONDUIT BOX LID (LEXIDE)	1.000	2.00
51XW0832A07	8-32 X .44, TAPTITE II, HEX WSHR SLTD SE	4.000	2.00

Parts List (continued)			
Product ID	Description	Quantity	List Price
MG1000G27	PAINT- S9282E CHARCOAL GREY	0.014	4,000.00
10XF0440S02	04-40 X 1/8 TYPE F HEX HD STAINLESS STIC	2.000	2.00
SP5056A26	MODEL 34 TYPE L STATIONARY SWITCH WITH L	1.000	17.00
HA3100A12	THRUBOLT 10-32 X 7.375	4.000	2.00
LB5040	INSTRUCTION TAG, AC & DC	1.000	2.00
LB1118	LABEL,WARNING (ROLL LABEL)	1.000	2.00
LB1125C01	STD (STOCK) CARTON LABEL BALDOR WITH FLA	1.000	2.00
LC0031	CONNECTION LABEL	1.000	2.00
NP1257L	NP STD LASER ENGRAVED THERMAL PROTECTED,	1.000	25.00
34PA1002	PACKING GROUP, BALDOR	1.000	13.00

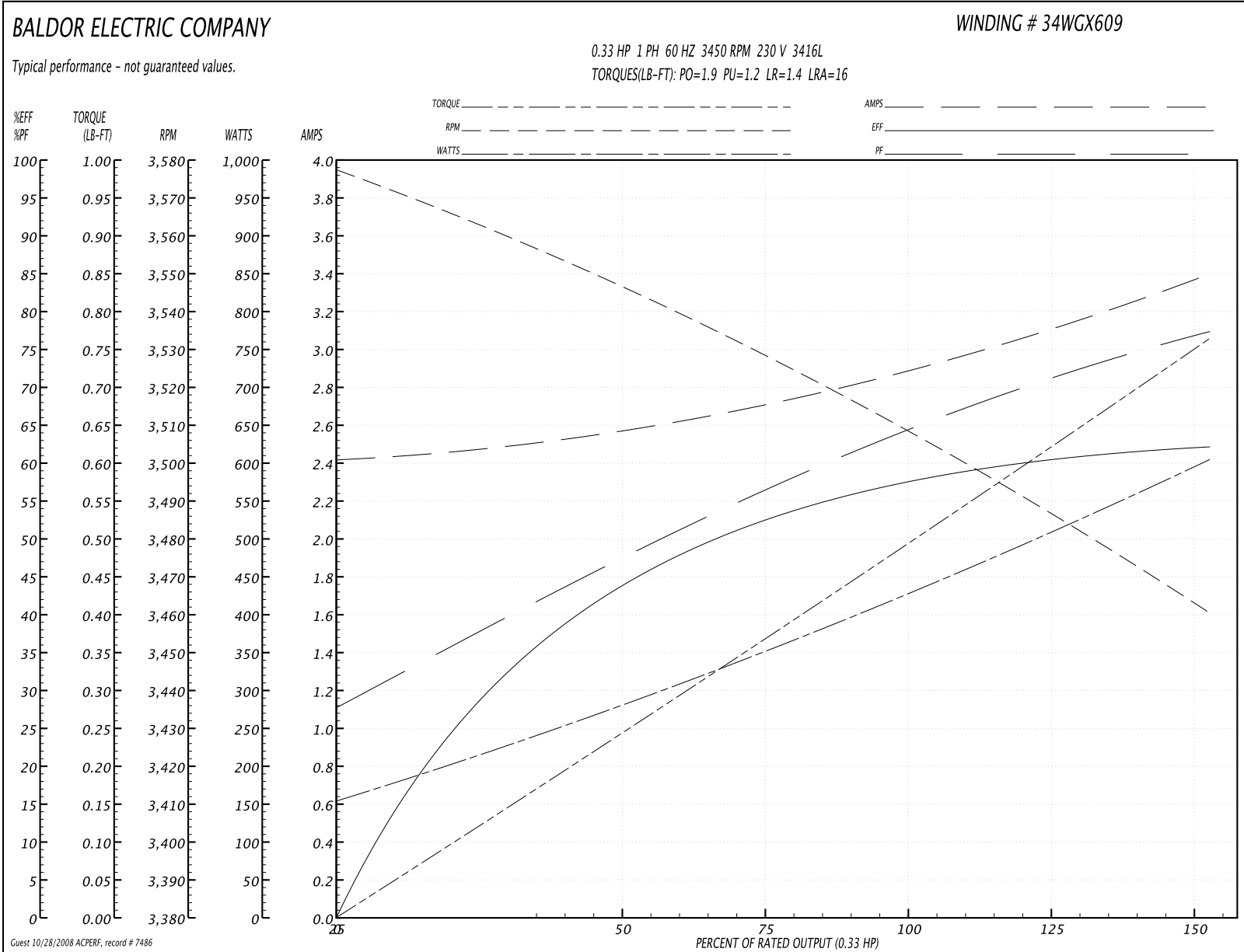
Performance Data at 230V, 60Hz, 0.33HP (Typical performance - Not guaranteed values)
General Characteristics

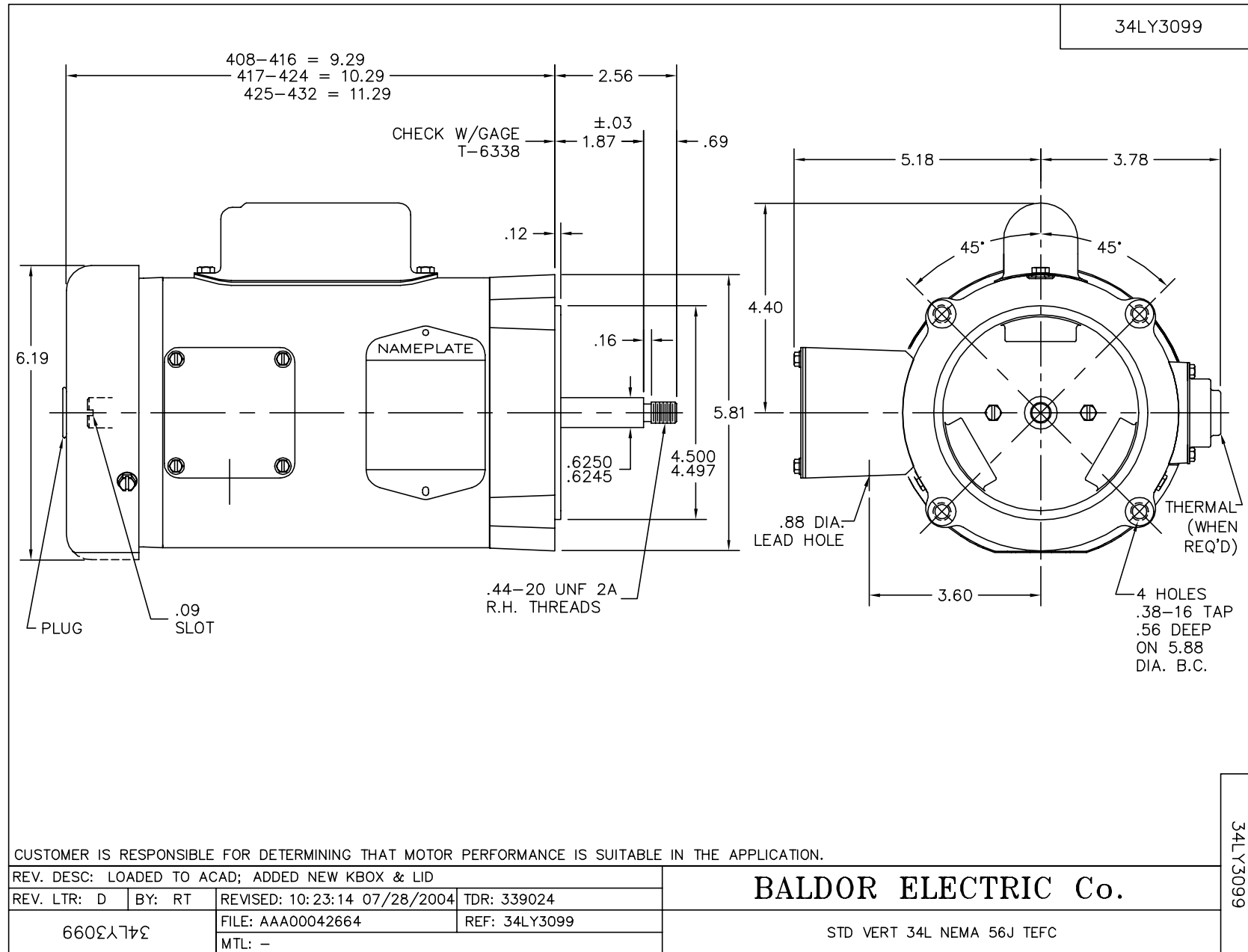
Full Load Torque:	0.51 LB-FT	Start Configuration:	DOL
No-Load Current:	2.4 Amps	Break-Down Torque:	1.9 LB-FT
Line-line Res. @ 25°C.:	4.84 Ohms A Ph / 3.7 Ohms B Ph	Pull-Up Torque:	1.2 LB-FT
Temp. Rise @ Rated Load:	0°C	Locked-Rotor Torque:	1.4 LB-FT
Temp. Rise @ S.F. Load:	0°C	Starting Current:	16.0 Amps

Load Characteristics

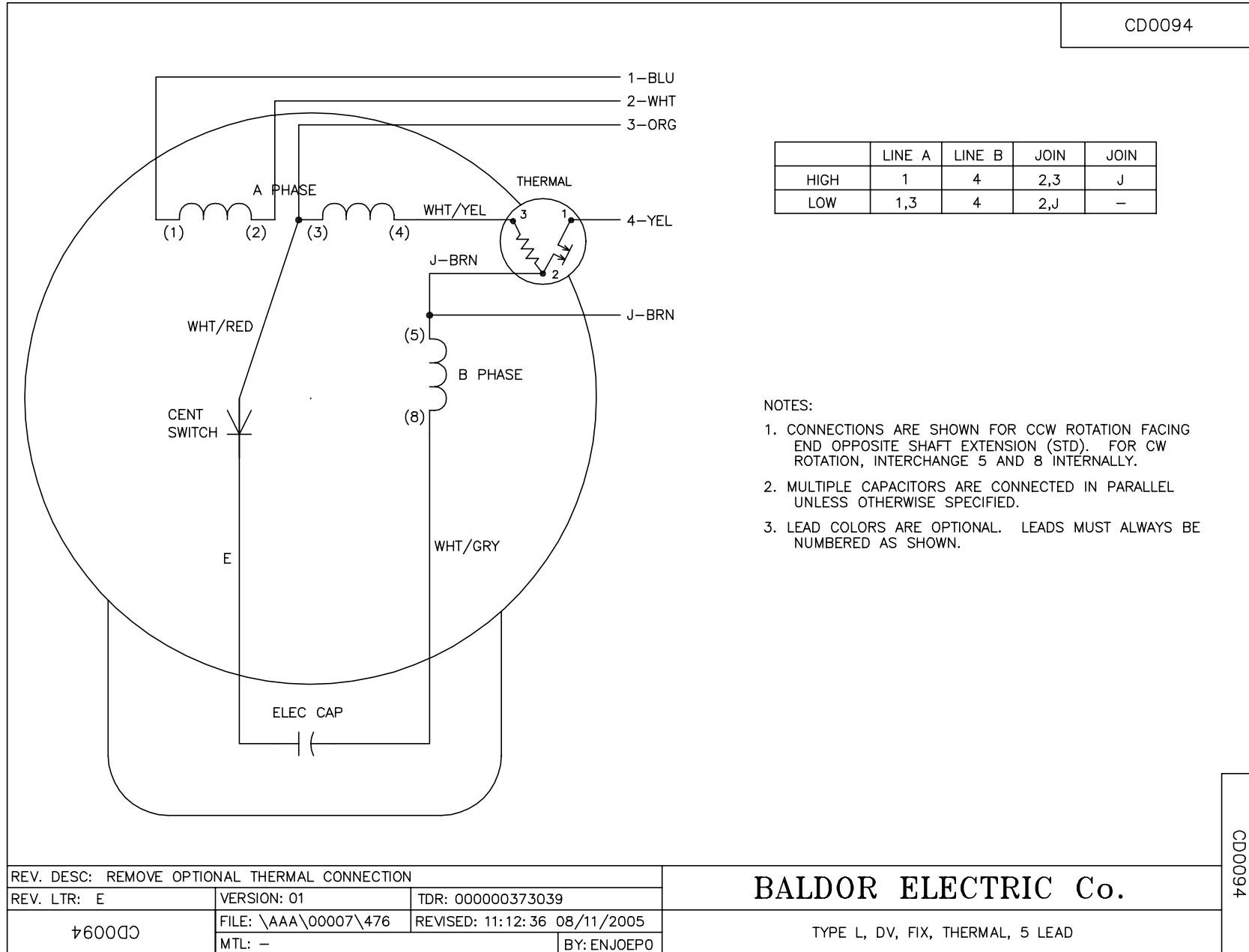
% of Rated Load:	25	50	75	100	125	150	S.F.
Power Factor:	40.0	49.0	57.0	64.0	70.0	75.0	82.0
Efficiency:	28.6	44.7	52.4	60.0	60.3	61.9	60.9
Speed:	3560.0	3544.0	3527.0	3508.0	3483.0	3460.0	3433.0
Line Amperes:	2.5	2.6	2.7	2.9	3.15	3.4	3.65

Performance Graph at 230V, 60Hz, 0.33HP (Typical performance - Not guaranteed values)





CD0094



CD0094

REV. DESC: REMOVE OPTIONAL THERMAL CONNECTION		
REV. LTR: E	VERSION: 01	TDR: 000000373039
CD0094	FILE: \AAA\00007\476	REVISED: 11:12:36 08/11/2005
	MTL: -	BY: ENJOEPO

BALDOR ELECTRIC Co.

TYPE L, DV, FIX, THERMAL, 5 LEAD